



CABINET

THURSDAY, 25TH AUGUST, 2016

At 7.30 pm

in the

COUNCIL CHAMBER - GUILDHALL,

SUPPLEMENTARY AGENDA

PART I

<u>ITEM</u>	<u>SUBJECT</u>	<u>PAGE NO</u>
ii.	New Primary School Places in Ascot - Appendix	3 - 272

This page is intentionally left blank



St. Michael's C.E. Primary School

School Road, Sunninghill, Ascot, Berkshire SL5 7AD
Tel 01344 622962 Fax 01344 873763

Ascot Primary School Consultation

St. Michael's C of E Primary School Submission.

The borough's consultation document presented at the Cordes Hall, Sunninghill sets out 4 options for delivering additional primary school places. Three of the options are for expanding one of our areas existing primary schools, and one option is for the construction of a new primary school.

The document rightly recognizes that St. Michael's C of E Primary School does not have the space to expand its primary provision, but viable options have been developed for Cheapside, South Ascot, and Holy Trinity. These options all have the advantage of being deliverable in time for the September 2017 intake, and at a much lower cost than a new school (£1.5m vs £6.5m).

If the consultation comes out in favour of a new school (Option D) then a site must be found for it. One suggestion at the meeting in the Cordes Hall was to relocate St. Michaels to the old gasholder site on the south side of the village. This was also one of several options identified in paragraph 9.6 of the Ascot, Sunninghill and Sunningdale Neighbourhood Plan, now adopted.

Our school and its governors do not support this option, for the following reasons:

- a. The School is at the center of the village and is very much at the heart of the community it serves. The school is listed in the Neighbourhood Plan as a landmark building and the views of the school are landmark views.

Relocation of the school would be a real loss to the village.

- b. At present the school lies near the center of its catchment and many of the pupils are within safe walking distance. The relocation would result in many more children having to be driven to school.
- c. The relocation of St. Michael's is not cost effective, as the cost would include both the new places required, and replacement of the existing places.



- d. There are access issues to the gasholder site, which is down a private road with on-street parking, making it effectively one way. The volume of traffic from and onto the High Street at periods of peak traffic is also a concern.
- e. Any new school should be located within its catchment, be within easy walking / cycling distance of the new development it serves and have good access and adequate parking.

The draft local plan identifies two development sites in the Ascot area, Ascot Centre (300 homes) and Heatherwood (200 homes) In addition to housing the Ascot Centre site includes a new primary school as well as a strategic open space, a community hub and a good network of pedestrian and cycle routes linking the site, to the High Street, station and Heatherwood.

We consider the Ascot Centre site to be the right location for a new primary school, and one we could support as it delivers a school within the catchment it serves and easy and safe pedestrian and cycle access.

If the decision is to expand one of the sites identified in options A to C, then we see Option A (Cheapside Expansion) as a sound option. The school is graded outstanding and the expansion will enhance the long term viability of the school.



Lorna Anderton
Headteacher

More school places in the Ascot area for primary school children

Consultation Summer 2016

We're asking you about providing new school places in Ascot.

We need more primary school places in the Ascot area, starting in September 2017.

This is because of planned new housing and families moving into the area.

We have some ideas about how to provide these new places. We now want your views on those ideas.

You can read more details about those ideas inside this consultation document.

**There will be a public meeting on:
Monday 4th July 2016, 7pm, Cordes Hall, Sunninghill.**

You can give us your views by completing the form in the centre of the booklet.

**You can also respond online at:
<https://www3.rbwm.gov.uk/consultations>**

**Responses must be received by
Friday 15th July 2016.**

We expect to make decisions about which option(s) to go ahead with⁵ this summer.

The Royal Borough



Windsor &
Maidenhead

Your views needed

In this document 'Ascot area' refers to the whole area, unless noted otherwise. The Ascot area includes:

**Cheapside
Sunningdale**

**North Ascot
Sunninghill**

South Ascot

In recent years, most year groups in the five primary schools in the Ascot area have been full, or close to full. This has meant that there have not always been local school places for families moving into the area.

In addition, we expect up to 1,300 new dwellings to be built in Ascot, Sunninghill and Sunningdale between now and 2030, which will further increase the demand for primary school places. We don't yet know when these new houses and flats will be built, and so we want to agree a set of proposals for new school places that can be implemented when needed.

We expect that the first new primary school places will be created in time for September 2017.

That's why the Royal Borough is asking for your views on school expansion in the Ascot area. Our options are summarised opposite, and addressed in more detail in the rest of this document.

What you say matters...

Parents, staff, governors, dioceses and community organisations are all being consulted. Your views are vital so please take time to be part of this consultation.

Public meeting – all welcome:

Monday 4th July 2016, 7pm, Cordes Hall, 8 High Street, Sunninghill. There is no on-site parking, but parking is available at the nearby Queens Road and Upper Village Road public car-parks.

You can tell us what you think by:

- Completing the online response form at www3.rbwm.gov.uk/consultations.
- Completing the paper response form (in the centre of this document) and:
 - returning it to your school, who will forward it on to us; or
 - posting it to Ascot Places Consultation, Zone F, Town Hall, Maidenhead, SL6 1RF.
- Writing to the address above.
- Emailing ascot.places@rbwm.gov.uk

The closing date for your comments is Friday 15th July 2016.

What happens after the consultation finishes?

The Royal Borough's Cabinet will consider the outcome of the consultation on 25th August 2016. At this meeting councillors will take your views into account before making any decisions. Cabinet will consider which option, if any, should be implemented in time for September 2017. It will also agree a priority order for the other options, to be given the go-ahead at a later date if needed.

If Cabinet does approve an option to provide new school places for September 2017, then we will publish a formal proposal in September 2016, with a four week representation period to allow objections to/comments on the proposal to be submitted. A final decision would then be made in late October 2016.

Primary schools in the Ascot area

There are five primary schools in the Ascot area.

School	Location	Places per year group (Published Admission Number or PAN)
Cheapside CE Primary School	Cheapside	16
Holy Trinity CE Primary School, Sunningdale	Sunningdale	30
St Francis Catholic Primary School	South Ascot	30
St Michael's CE Primary School	Sunninghill	30
South Ascot Village Primary School	South Ascot	30

North Ascot, although within the Royal Borough, is served by the Bracknell Forest schools, Ascot Heath Infant, Ascot Heath CE Junior and Cranbourne Primary School.

A map showing the location of the schools can be found on the back page of this document.

A summary of the options


We are consulting you on a number of options for providing new primary school places in the Ascot area. These are summarised below, with more detail given in the rest of the document.

The Royal Borough has agreed a provisional priority order for the options currently being considered, subject to this consultation. A combination of options is likely to be necessary to provide the extra places we need.

Options for new primary school places in the Ascot area...

Priority Option

- 1. Option A – Cheapside CE Primary School.**
Expand from **16** to **30** places per year group.
- 2. Option B – South Ascot Village Primary School.**
Expand from **30** to **60** places per year group.
- 3. Option C – Holy Trinity CE Primary School.**
Expand from **30** to **60** places per year group.
- 4. Option D – A new primary school.**
Build a new primary school on a currently unidentified site, with **30** children per year group.



No decisions
have been taken
on **any** options.

The Royal Borough is not currently considering expansion at either St Michael's CE Primary School or St Francis Catholic Primary School. Both schools are on sites with limited opportunity for expansion. Either school could, however, be relocated and expanded onto a larger site if one became available and if those school communities agreed. This could be an option for the longer term.

Why do we need extra school places?

Local demand...

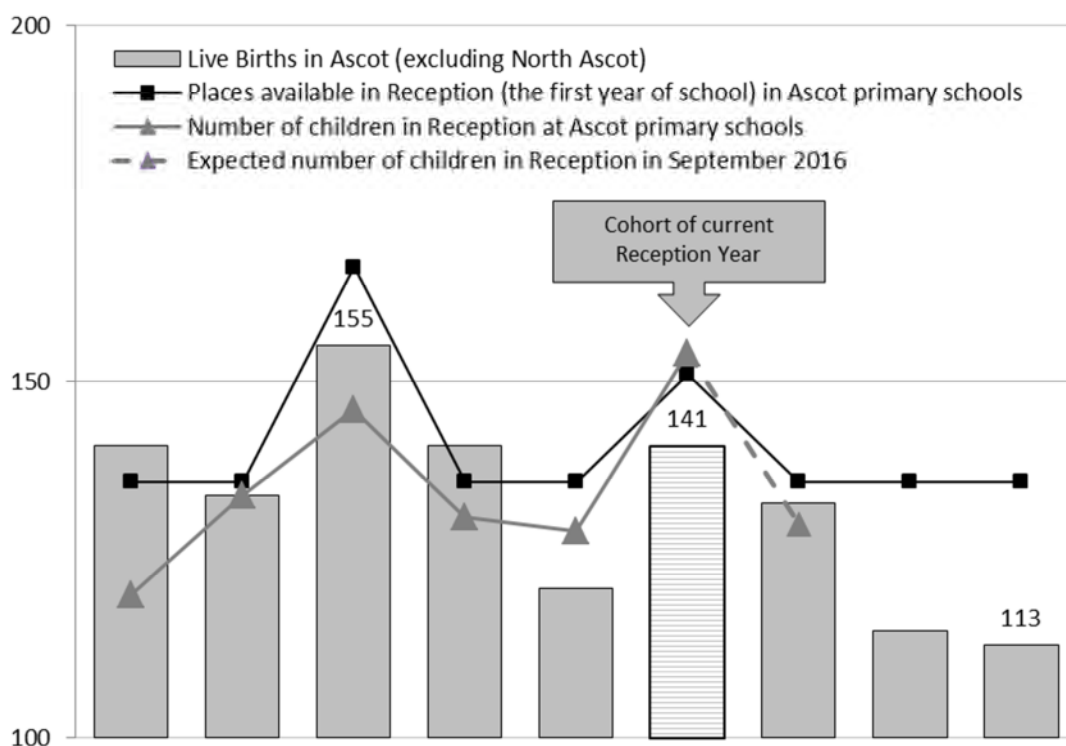
The number of children born in Ascot has fallen in recent years, which has led to a fall in the demand for Reception places in the five primary schools in September 2016.

The chart below shows, by year of start in a primary school Reception class:

- The number of Live Births in Ascot (the grey bars).
- The number of Reception places available in Ascot (the black line).
- The number of children on roll in Reception each year in an Ascot school (the grey line).

These figures exclude North Ascot, which is served mainly by Bracknell Forest primary schools.

Number of children born in Ascot, by year that they start in Reception at a primary school



Source: Office of National Statistics and RBWM annual pupil census

Reception Intake Year (September)	Actual intakes						Future intakes		
	2010	2011	2012	2013	2014	2015	2016	2017	2018
Year of births	2005/06	2006/07	2007/08	2008/09	2009/10	2010/11	2011/12	2012/13	2013/14
Age as at 31 st August 2015	9	8	7	6	5	4	3	2	1
Live Births	141	134	155	141	121	141	133	115	113
Permanent Places	136	136	136	136	136	136	136	136	136
Bulge Class Places	0	0	30	0	0	15	0	0	0
Total Places	136	136	166	136	136	151	136	136	136
Reception Intake	120	134	146	131	129	154	130	n/a	n/a

The number of live births in the Ascot area peaked at 155 with the cohort of children who went on to start primary school in September 2012. Since then, the number of live births has generally been falling, so that just 113 children were born in the cohort that is due to start primary school in September 2018.

The national birth rate has also fallen in recent years.

We believe, therefore, that we already have enough Reception places for children starting school in the Ascot area in both 2017 and 2018. It is possible, however, that the local birth rate will increase again at some point over the next decade.

New housing...

The number of new dwellings built each year in the Ascot area is, on average, about 60.

In 2014 Ascot residents approved (in a referendum) the Ascot, Sunninghill and Sunningdale Neighbourhood Plan. This plan considered housing needs in the local area and identified a number of large sites that would be suitable for new housing. These sites could provide an extra 50 new dwellings per year. Overall, this would mean around 1,300 new flats and houses in Ascot by 2030.

These sites include:

- Ascot North (north of Ascot High Street).
- Ascot South (south of Ascot High Street).
- Land at Ascot Station.
- Heatherwood Hospital site.
- Shorts Yard, off St George's Lane.
- The Gasholder site, Sunninghill.
- Site at Broomhall Lane, Sunningdale.
- Sunningdale Park.
- Silwood Park, Sunninghill.

We don't know exactly what will be built on these sites until housing developers submit planning applications, but it is likely that many of the new dwellings will be three and four bedroom properties.

On this basis, 1,300 new homes could bring between **300** and **650** extra primary school age children into the area. Although some of these children would go to independent schools or schools in other local authority areas, we could need between 45 and 90 extra primary school places per year group by 2030.

The impact of these new dwellings is likely to be spread out over the next fifteen years, but we need to start planning for this additional demand now.

Movement into the area...

In recent years most year groups in the five primary schools have been full. This has created difficulties for families moving into the area and we have had to ask schools to take more children than they have space for in some year groups. Without more places, and even without any new housing, there is a risk that some children may have to be placed in schools outside the area.

To avoid this, we are keen to provide new school places in the Ascot area by September 2017 at the latest.

Having some spare places available...

The Royal Borough would also like to provide more primary school places so that there are some spare – surplus - places in the system. This is important because it means that:

- More families are likely to be offered a place at their preferred school.
- There are spaces available for families moving into the area.
- There is spare capacity in case demand for places is higher than anticipated.

Ideally we want to have up to 10% surplus places in Ascot, Sunninghill and Sunningdale. In January 2016, six out of the seven primary school year groups had 2% or fewer spare places.

Funding new school places

Work on finding out the likely cost of providing the required new primary school places is now beginning. Most of the funding will come from limited government grants given to us for the specific purpose of creating new school places. This grant is already under pressure from the need to provide new secondary school places in Ascot and elsewhere in the borough. There is also some money available to us from housing developers, who are required to contribute towards the cost of providing new infrastructure.

As might be expected, some of the options given here are more expensive than others. The Royal Borough will need to consider these different costs, as well as a range of other factors, when considering which options to take forward. It is important that the cost of the expansion works is affordable, using the limited funding outlined above.

What happens if no new places are provided?

If none of the options go ahead then some children will be left without school places. Other children would find themselves taught in schools that are overcrowded or farther away from their home than their families would like.

This page is intentionally blank

New Primary Places – Option A: Cheapside CE Primary School

Cheapside CE Primary School is situated in the village of Cheapside, and is a Voluntary Aided Church of England school. It has an admission number of 16, making it the smallest primary school in Ascot.

The proposal for Cheapside involves increasing the admission number from 16 to 30 for the Reception intake. Subsequent intakes would also be for 30 children. As these larger year groups move up through the school, the overall number of places at Cheapside will increase from the current 112 to 210. To help provide more places for families moving into the area, however, the school will also take additional children into other year groups once the building project is complete, if needed.

Cheapside currently has to combine its year groups of 16 into classes of 30, which means that each class has two year groups in it. If the school expands, however, they will be able to teach each year group as a separate class.

To expand, the school will need three new classrooms, associated toilets and a small group room. This could involve the loss either of the swimming pool or the biodiversity pond. Staff parking would need to be increased. The school will also need to lease an adjacent parcel of land that is currently owned by Sunninghill Parochial Charities. The heavily wooded site will require some clearing to make it suitable, but the school want to retain it as a mainly wooded area, creating a 'forest school' environment. The charity has agreed in principle to lease the site to the school, subject to a satisfactory lease agreement between both parties.

If we do proceed with this option, then the school may also need to consider changing the formal designated (catchment) area so that it covers a wider area.

Headteacher:
Mrs Kate Searle

Ofsted Inspection Judgement:
Outstanding (2007)

Address:
Watersplash Lane
Cheapside, Ascot
SL5 7QJ

Website:
www.cheapsideschool.org.uk

School Type:
Voluntary Aided



Numbers on roll (September) (excluding nursery)	2010	2011	2012	2013	2014	2015
PAN (Published Admission Number)	16	16	16	16	16	16
Reception Intake	17	17	16	16	16	16
Surplus (spare places) +/-	-1	-1	-	-	-	-
Net Capacity (capacity of buildings)	112	112	112	112	112	112
Total Number On Roll	112	114	112	113	118	115
Surplus (spare places) +/-	-	-2	-	-1	-6	-3

Pull-out Response Form

This is your opportunity to have your say about the proposed options for new primary school places in Ascot.

You can respond by:

- Using this pull-out form and sending it either direct to the address below or to your school (who will send it on to us)
- Writing to Ascot Places Consultation, using the address below.
- Emailing ascot.places@rbwm.gov.uk.



You can view this document online at <https://www3.rbwm.gov.uk/consultations>. An online response form is also available here.

The closing date for your responses is Friday 15th July 2016

Section 1 – About You

You do not have to provide this information but it would be helpful if you would complete these details about yourself. The information will be used solely for consultation analysis.

1. **Name:**

2. **Address:**

Postcode:

3. **I am (please insert the school name where applicable):**

A parent of a pupil at:

A governor at:

A member of staff at:

A resident (please specify area):

Other (please specify):

Please return this form either to your school for them to return to us or to:

**Ascot Places Consultation
Zone F, Town Hall, St Ives Road, Maidenhead, SL6 1RF**

All views received by **Friday 15th July 2016** will be taken into account before any final decisions are made. All responses will be publicly available (with personal details blanked out) unless expressly requested otherwise.

If you have any questions about the proposal or need further information, please call 01628 796572, or email ascot.places@rbwm.gov.uk.

Section 2 – New Primary School Places – Your Views

4. Given that new places are required for children living in Ascot, please indicate your preferred solution(s) below.

Please rank the options in order of your preference, from **1 (Best)** to **5 (Worst)**. You do not have to rank every option if you do not want to.

If you do not support the option at all, or have no view on it, please put a cross in the appropriate box on the right.

Options	My preferred options, in ranked order, are:	I do not support this option.	I have no view on this option.
	Rank 1 to 5	Mark with an 'x'	Mark with an 'x'
Option A Expand Cheapside CE Primary School from 16 to 30 places per year group.	<input type="checkbox"/>	<input checked="" type="checkbox"/>	<input checked="" type="checkbox"/>
Option B Expand South Ascot Village Primary School from 30 to 60 places per year group.	<input type="checkbox"/>	<input checked="" type="checkbox"/>	<input checked="" type="checkbox"/>
Option C Expand Holy Trinity CE Primary School from 30 to 60 places per year group.	<input type="checkbox"/>	<input checked="" type="checkbox"/>	<input checked="" type="checkbox"/>
Option D Build a new primary school in Ascot	<input type="checkbox"/>	<input checked="" type="checkbox"/>	<input checked="" type="checkbox"/>
Option E An alternative suggestion. Please give details below:	<input type="checkbox"/>	<input checked="" type="checkbox"/>	<input checked="" type="checkbox"/>

5. **Comments.** If you have any comments relating to the above options please give these below (you may use a separate sheet if necessary).

The closing date for your responses is Friday 15th July 2016

This page is intentionally blank

The Headteacher and Governing Body of Cheapside CE Primary School have considered the proposal and "are fully in support of proposed expansion plans to increase Year Group numbers from 16 to 30, thus going to one form entry."

Advantages:

- ☑ The school is graded 'Outstanding' by Ofsted.
- ☑ The school is popular, and is usually oversubscribed at Reception intake on first preferences.
- ☑ The school will be able to teach in whole year group classes, although this will be phased in as pupil numbers slowly increase.
- ☑ Expansion could be achieved quickly, allowing for more Reception places to be offered by September 2017.
- ☑ The borough would be able to provide places to children in other year groups as well, as the school is willing to take extra children in all year groups once the extra accommodation is provided.
- ☑ With more children on roll, the school will receive more funding. This will assist with the school's longer-term financial viability, ensuring that the school can continue to serve the local community and deliver high quality teaching and learning.
- ☑ Larger schools can find it easier to recruit staff, and there are more opportunities for professional development.
- ☑ Bigger budgets and additional staff can make it easier to deliver a broad curriculum and improve outcomes for all.
- ☑ The leasing of the adjacent, wooded, parcel of land will create an attractive 'forest school' environment.
- ☑ This scheme costs less than the other options, although it also delivers fewer places.

Disadvantages:

- ☒ The school is located outside three main villages in the Ascot area, although it is still less than two miles away from most of the area.
- ☒ The school is in the Green Belt, and so we would need to prove that there are Very Special Circumstances that justify the new buildings.
- ☒ The expansion could lead to issues with congestion, parking and safety on-site and on local roads. We would work with the school to improve their existing pupil drop-off/pick-up arrangements to minimise any impact.
- ☒ The school site is not currently large enough for the proposed 210 pupils, which means that we will need to lease an adjacent parcel of land from the Sunninghill Parochial Charities. Although this is agreed in principle, we still need to negotiate a final agreement that is acceptable to all parties.
- ☒ There will be an annual cost to the lease of this land, which will need to be met from existing budgets.
- ☒ As with all of the options, expansion at Cheapside will not provide enough places for all of the expected demand. One or more of the other options would also probably need to go ahead in due course.

New Primary Places – Option B: South Ascot Village Primary School

South Ascot Village Primary School is situated in South Ascot. The school is a Community school, with an admission number of 30, and also has a nursery class.

The proposal for South Ascot Village Primary involves increasing the admission number from 30 to 60 for Reception intake. Subsequent intakes would also be for 60 children. As these larger year groups move up through the school, the overall number of places at South Ascot Village Primary will increase from the current 210 to 420.

The school has already taken one 'bulge' class, in September 2012, to cope with a peak in demand in Ascot.

To expand, the school will need up to six new classrooms, associated toilets and group rooms, and either an extended main school hall or a second large space. This would probably be achieved by building a first floor onto the single-storey Foundation Stage building (at Liddell Way). Staff parking would need to be increased.

South Ascot Village Primary School already serves the whole Ascot area, with the exception of North Ascot. It would not be necessary to make any changes to the school's designated (catchment) area.

Headteacher:

Mrs Kate Rimell

Ofsted Inspection Judgement:

Good (2015)

Address:

All Soul's Road
Ascot
SL5 9EA

Website:

www.southascotvillageschool.org.uk

School Type:

Community



Numbers on roll (September) (excluding nursery)	2010	2011	2012	2013	2014	2015
PAN (Published Admission Number)	30	30	60	30	30	30
Reception Intake	22	28	39	26	23	31
Surplus (spare places) +/-	+8	+2	+21	+4	+7	-1
Net Capacity (capacity of buildings)	210	210	240	240	240	240
Total Number On Roll	167	193	204	211	200	209
Surplus (spare places) +/-	+43	+17	+36	+29	+40	+31

The Headteacher and Governing Body of South Ascot Village Primary School have considered the proposal and support it, saying “*The Head and Governing Body are very supportive of the proposals to expand primary provision, and would very much welcome this to occur at our School following public consultation.*”

Advantages:

- The school is graded ‘Good’ by Ofsted.
- The school is located in South Ascot, close to some of the larger sites identified for new housing in Ascot (Heatherwood, Ascot High Street and Ascot Station).
- The site is large enough to enable the school to take the extra children, while still leaving plenty of playground and outdoor space.
- The school site is not in the Green Belt.
- With more children on roll, the school will receive more funding. This will assist with the school’s longer-term financial viability, ensuring that the school can continue to deliver high quality teaching and learning.
- Larger schools can find it easier to recruit staff, and there are more opportunities for professional development.
- Bigger budgets and additional staff can make it easier to deliver a broad curriculum and improve outcomes for all.
- The school already serves the whole of the Ascot area, and so it will not be necessary to change the school’s designated area.
- This scheme should minimise disruption for children at the school, because the most likely option will be to build a first floor onto the Foundation Stage building, away from the main school.

Disadvantages:

- The school is not usually oversubscribed on first preferences.
- The expansion could lead to issues with congestion, parking and safety on-site and on local roads. We will be working with the school to build on their existing pupil drop-off/pick-up arrangements to minimise any impact.
- It is highly unlikely that this building project could be achieved for September 2017, making it more appropriate that expansion here happens later.
- As with all of the options, expansion at South Ascot Village Primary will not provide enough places for all of the expected demand. One or more of the other options would also probably need to go ahead in due course.

New Primary Places – Option C: Holy Trinity CE Primary School

Holy Trinity CE Primary School is situated in Sunningdale. The school is a Voluntary Aided Church of England school, with an admission number of 30.

The proposal for Holy Trinity Primary involves increasing the admission number from 30 to 60. Subsequent intakes would also be for 60 children. As these larger year groups move up through the school, the overall number of places at Holy Trinity Primary will increase from the current 225 to 420.

The school has already taken one 'bulge' class, in September 2015, to cope with a peak in demand in Ascot.

To expand, the school will need six new classrooms, associated toilets and group rooms, and an internal alteration to increase the size of the hall. This would probably be achieved by either building a new two storey block at the front of the school or putting a first floor over some of the existing classrooms. Staff parking would need to be increased and the arrangements for off-site parental drop-off of children would need to be developed.

If we do proceed with this option, then the school may also need to consider changing the formal designated (catchment) area, so that it covers a wider area.

Headteacher:
Mrs Pamela O'Brien

Ofsted Inspection Judgement:
Good (2014)

Address:
Church Road
Sunningdale
SL5 ONJ

Website:
www.holytrinityschsunningdale.co.uk

School Type:
Voluntary Aided



Numbers on roll (September) (excluding nursery)	2010	2011	2012	2013	2014	2015
PAN (Published Admission Number)	30	30	30	30	30	45
Reception Intake	25	31	31	29	30	47
Surplus (spare places) +/-	+5	-1	-1	+1	-	-2
Net Capacity (capacity of buildings)	210	210	210	210	210	225
Total Number On Roll	207	211	210	212	216	232
Surplus (spare places) +/-	+3	-1	-	-2	-6	-7

The Headteacher and Governing Body of Holy Trinity CE Primary School have considered the proposal and agree it should be put to public consultation.

Advantages:

- ✓ The school is graded 'Good' by Ofsted.
- ✓ The school is popular, and is usually oversubscribed at Reception intake on first preferences.
- ✓ The school is located in Sunningdale, close to some of the larger sites identified for new housing in the Ascot area (Broomhall Lane and Sunningdale Park).
- ✓ The site is large enough to enable the school to take the extra children, while still leaving enough playground and outdoor space.
- ✓ The school site is not in the Green Belt.
- ✓ With more children on roll, the school will receive more funding. This will assist with the school's longer-term financial viability, ensuring that the school can continue to deliver high quality teaching and learning.
- ✓ Larger schools can find it easier to recruit staff, and there are more opportunities for professional development.
- ✓ Bigger budgets and additional staff can make it easier to deliver a broad curriculum and improve outcomes for all.

Disadvantages:

- ✓ The expansion could lead to issues with congestion, parking and safety on-site and on local roads. We would work with the school to build on their existing pupil drop-off/pick-up arrangements to minimise any impact.
- ✓ There would be disruption for children and staff during construction of extensions to the existing school buildings. The works would also affect the playground and staff parking.
- ✓ It is highly unlikely that this building project could be achieved for September 2017, making it more appropriate that expansion here happens later.
- ✓ The school is in a conservation area, which could make construction of the new buildings relatively expensive.
- ✓ As with all of the options, expansion at Holy Trinity will not provide enough places for all of the expected demand. One or more of the other options would also need to go ahead in due course.

New Primary Places – Option D:

A new primary school

Another way of meeting the demand for primary places is to build a new school. As there is only limited capacity on our existing school sites to expand, it may be necessary to build a new school, particularly if more of the new dwellings are family homes.

No specific site has currently been identified for this and the borough does not own any suitable sites of a sufficient size in Ascot. A landowner would, therefore, need to make land available for a school. The Ascot Neighbourhood Plan Delivery Group is already in discussion with local landowners about some potential options.

A site for a 210 place primary school would need to be about 1 hectare (2.5 acres) in size, whilst a 420 place primary school would need about 1.6 hectares (4.0 acres). Much of Ascot area is in the Green Belt, which could make it difficult to get planning permission. A new site will also have many of the same issues with traffic congestion and parking as an existing school, although it may be easier to address via an on-site drop-off/pick up arrangement if the site is large enough.

Any new school would almost certainly be an academy, which is a state-funded school independent of local authority control, known as a 'free' school. If the Royal Borough decides that a new primary school is needed to meet demand, then we will need to work with the DfE to find a sponsor for the free school. This could involve running a competition to identify the best partner.

Having identified the need for a free school, the costs of land purchase, capital and start-up costs would probably have to be met by the Royal Borough.

If a new school is built, we would need to work with schools to consider whether the current designated (catchment) area boundaries should be redrawn.

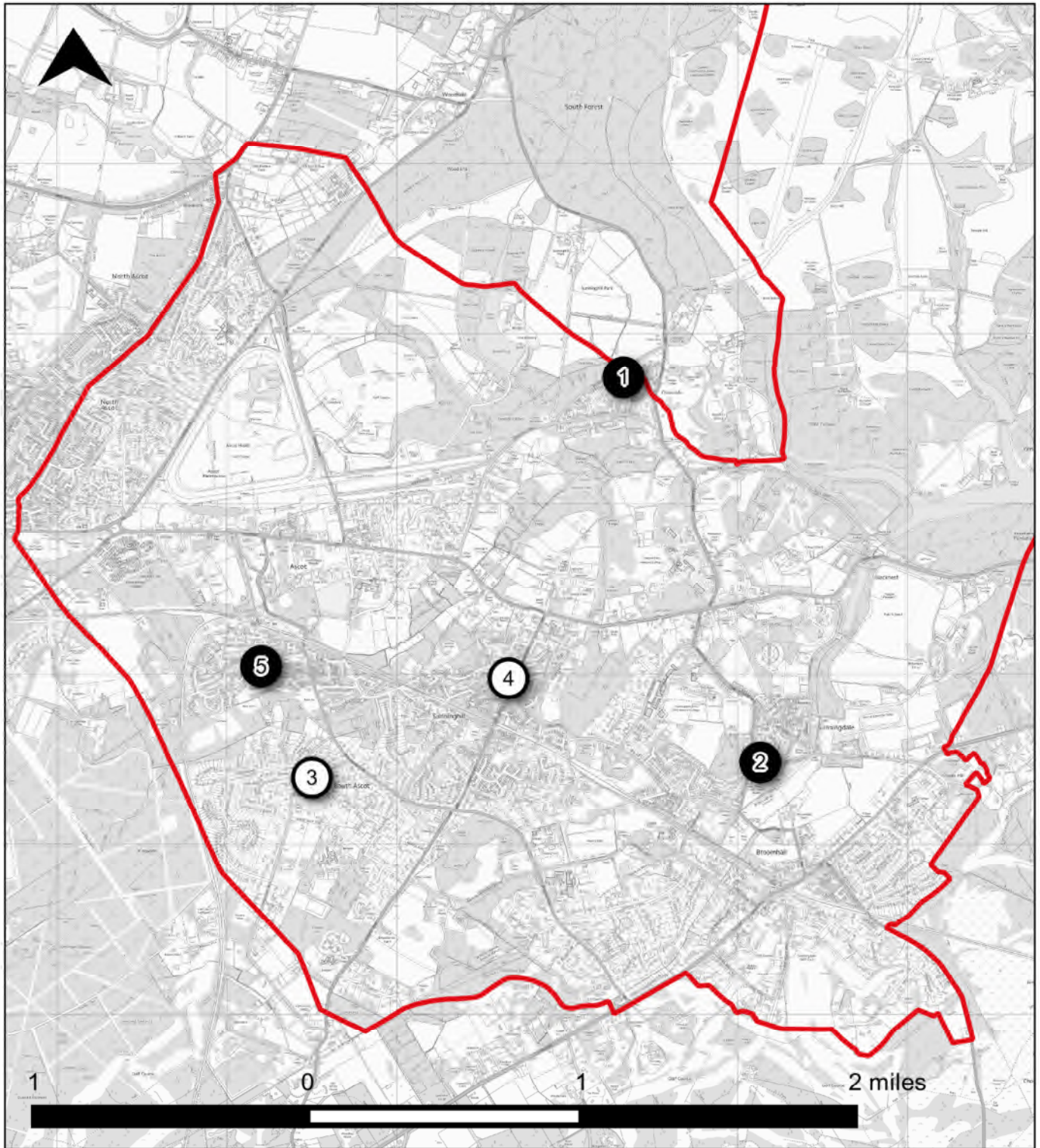
Advantages:

- ✓ A new school site would increase the choice of provision in Ascot.
- ✓ Building works could be undertaken without disruption to pupils at existing schools.
- ✓ Building on an empty site should be relatively straightforward.
- ✓ If a site of sufficient size can be found, then it will be possible to allow an on-site drop-off zone and significant amounts of parking, although obviously we hope that the location would allow most children to walk to the school.

Disadvantages:

- ✗ No site is currently identified and it may not be possible to find a suitable, affordable, site.
- ✗ It is unlikely that a new school could be opened before September 2019, unless an appropriate building/site of sufficient size became available quickly.
- ✗ Building a new school will be significantly more expensive than extending an existing one.
- ✗ Most of the Ascot area is in the Green Belt, which means that any new school site is also likely to be in the Green Belt. This could make it difficult to get planning permission.
- ✗ A new site may have significant additional costs if, for example, it is a brownfield site that needs clearing and/or decontamination.
- ✗ Alternatively, a new site may have significant additional costs if it is a greenfield site, and needs a new access road and services (water, electricity, sewage) provided.
- ✗ Any new site may well have existing uses that need to be relocated or re-provided elsewhere.
- ✗ A new school is not immediately deliverable, as a site needs to be found, as well as a sponsor for the new school. This option is only likely to be implemented, therefore, in the longer term.
- ✗ We would need to change the designated area boundaries for the local primary schools.
- ✗ Unless we were to build a very large primary school, even this option might not provide enough places for all of the expected demand. One or more of the other options would also probably be needed.

Map showing schools in Ascot

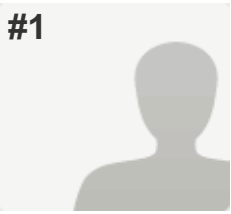


© Crown Copyright and database right 2016. Ordnance Survey 100018817.

The map above shows the location of the primary schools in Ascot, Sunninghill and Sunningdale. The schools indicated in black circles above are those directly affected by this consultation exercise.

1. Cheapside CE Primary School
2. Holy Trinity CE Primary School
3. St Francis Catholic Primary School
4. St Michael's CE Primary School
5. South Ascot Village Primary School

#1



COMPLETE



PAGE 3: NEW PRIMARY SCHOOL PLACES - YOUR VIEWS

Q8: Please rank the options in your order of preference from 1 (best) to 5 (worst).

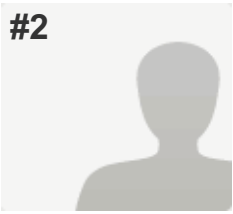
Option A - Expand Cheapside CE Primary School from 16 to 30 places per year group.	3
Option B - Expand South Ascot Village Primary School from 30 to 60 places per year group.	Best 1
Option C - Expand Holy Trinity CE Primary School from 30 to 60 places per year group.	4
Option D - Build a new primary school in Ascot.	2
Option E - An alternative suggestion.	I have no view on this option

PAGE 4: COMMENTS

Q9: 5. Comments. If you have any comments relating to the above options, please give these below

Respondent skipped this question

#2



COMPLETE



PAGE 3: NEW PRIMARY SCHOOL PLACES - YOUR VIEWS

Q8: Please rank the options in your order of preference from 1 (best) to 5 (worst).

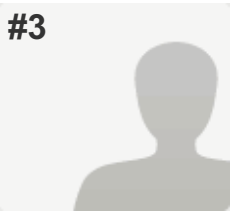
Option A - Expand Cheapside CE Primary School from 16 to 30 places per year group.	Best 1
Option B - Expand South Ascot Village Primary School from 30 to 60 places per year group.	4
Option C - Expand Holy Trinity CE Primary School from 30 to 60 places per year group.	2
Option D - Build a new primary school in Ascot.	3
Option E - An alternative suggestion.	Worst 5

PAGE 4: COMMENTS

Q9: 5. Comments. If you have any comments relating to the above options, please give these below

Respondent skipped this question

#3



COMPLETE



PAGE 3: NEW PRIMARY SCHOOL PLACES - YOUR VIEWS

Q8: Please rank the options in your order of preference from 1 (best) to 5 (worst).

Option A - Expand Cheapside CE Primary School from 16 to 30 places per year group.	I do not support this option
Option B - Expand South Ascot Village Primary School from 30 to 60 places per year group.	I do not support this option
Option C - Expand Holy Trinity CE Primary School from 30 to 60 places per year group.	I have no view on this option
Option D - Build a new primary school in Ascot.	Best 1
Option E - An alternative suggestion.	I have no view on this option

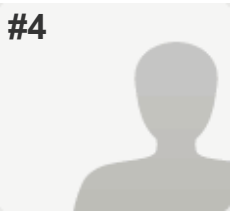
PAGE 4: COMMENTS

Q9: 5. Comments. If you have any comments relating to the above options, please give these below

If South Ascot Village school is to be expanded could you please find a solution to the traffic problems near the school. There are alot of residence and school children all using one road (Bouldish Farm Road) to get in and out, with no parking for parents to stop to drop children off at school. This is exacerbated on Tuesdays when bin lorries are added into the equation.

I am not very familiar with how Cheapside School works, but as someone who works in a pre-school can see the advantage of having schools in the borough with smaller classes (and the whole school being so much smaller) for certain children, so they are not 'lost' in a bigger school.

#4



COMPLETE



PAGE 3: NEW PRIMARY SCHOOL PLACES - YOUR VIEWS

Q8: Please rank the options in your order of preference from 1 (best) to 5 (worst).

Option A - Expand Cheapside CE Primary School from 16 to 30 places per year group. 2

Option B - Expand South Ascot Village Primary School from 30 to 60 places per year group. Best 1

Option C - Expand Holy Trinity CE Primary School from 30 to 60 places per year group. 3

Option D - Build a new primary school in Ascot. I do not support this option

Option E - An alternative suggestion. I do not support this option

PAGE 4: COMMENTS

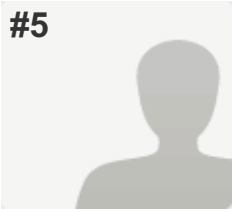
Q9: 5. Comments. If you have any comments relating to the above options, please give these below

To build a brand new primary school is not beneficial in an area with quite a high geographical concentration of primary schools already. I don't think it would be a good use of resources.

I think South Ascot Village school would be a good school to expand because it has large grounds and also the building and area of the Nursery which currently appears to be a little under utilised in an area with a large amount of flexible nursery provision and could be repurposed.

More primary school places in the Ascot area

#5



COMPLETE



PAGE 3: NEW PRIMARY SCHOOL PLACES - YOUR VIEWS

Q8: Please rank the options in your order of preference from 1 (best) to 5 (worst).

- | | |
|---|------------------------------|
| Option A - Expand Cheapside CE Primary School from 16 to 30 places per year group. | 3 |
| Option B - Expand South Ascot Village Primary School from 30 to 60 places per year group. | 2 |
| Option C - Expand Holy Trinity CE Primary School from 30 to 60 places per year group. | 2 |
| Option D - Build a new primary school in Ascot. | I do not support this option |
| Option E - An alternative suggestion. | Best 1 |

Please give details of your suggested alternative(s) below.

Why not build a new and bigger school to replace St Michael's as the outside space is currently limited? The new school would be purpose built and the money from selling the current school site could help to fund this development. Will expanding Cheapside with an extra 15 places alleviate the situation?

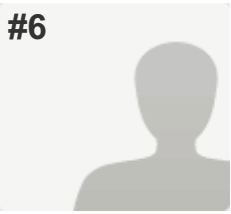
PAGE 4: COMMENTS

Q9: 5. Comments. If you have any comments relating to the above options, please give these below

There always seems to be a teacher recruitment issue in the area. 5 teachers have recently resigned from St Michael's in Sunninghill so how will the borough address the expansion/new schools and the teaching issue?

More primary school places in the Ascot area

#6



COMPLETE



PAGE 3: NEW PRIMARY SCHOOL PLACES - YOUR VIEWS

Q8: Please rank the options in your order of preference from 1 (best) to 5 (worst).

- | | |
|---|-------------------------------|
| Option A - Expand Cheapside CE Primary School from 16 to 30 places per year group. | Best 1 |
| Option B - Expand South Ascot Village Primary School from 30 to 60 places per year group. | 3 |
| Option C - Expand Holy Trinity CE Primary School from 30 to 60 places per year group. | 4 |
| Option D - Build a new primary school in Ascot. | Worst 5 |
| Option E - An alternative suggestion. | I have no view on this option |

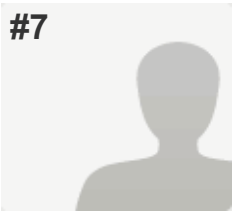
PAGE 4: COMMENTS

Q9: 5. Comments. If you have any comments relating to the above options, please give these below

Cheapside is the obvious choice as it's a small school but has outstanding Ofsted, and will standardise teaching so teachers only have to teach 1 school year at a time rather than having combined school years.

More primary school places in the Ascot area

#7



COMPLETE



PAGE 3: NEW PRIMARY SCHOOL PLACES - YOUR VIEWS

Q8: Please rank the options in your order of preference from 1 (best) to 5 (worst).

- | | |
|---|-------------------------------|
| Option A - Expand Cheapside CE Primary School from 16 to 30 places per year group. | 3 |
| Option B - Expand South Ascot Village Primary School from 30 to 60 places per year group. | 4 |
| Option C - Expand Holy Trinity CE Primary School from 30 to 60 places per year group. | 2 |
| Option D - Build a new primary school in Ascot. | Best 1 |
| Option E - An alternative suggestion. | I have no view on this option |

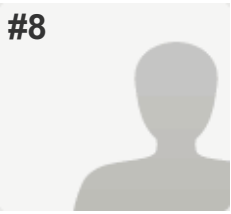
PAGE 4: COMMENTS

Q9: 5. Comments. If you have any comments relating to the above options, please give these below

Respondent skipped this question

More primary school places in the Ascot area

#8



COMPLETE



PAGE 3: NEW PRIMARY SCHOOL PLACES - YOUR VIEWS

Q8: Please rank the options in your order of preference from 1 (best) to 5 (worst).

- | | |
|---|------------------------------|
| Option A - Expand Cheapside CE Primary School from 16 to 30 places per year group. | 3 |
| Option B - Expand South Ascot Village Primary School from 30 to 60 places per year group. | 2 |
| Option C - Expand Holy Trinity CE Primary School from 30 to 60 places per year group. | I do not support this option |
| Option D - Build a new primary school in Ascot. | Best 1 |
| Option E - An alternative suggestion. | 3 |

Please give details of your suggested alternative(s) below.

Perhaps a combination of A and B, given these school are most likely closer to the area from which most of the children will be coming and this will help to minimise the traffic congestion around the area. I do not support Holy Trinity further expansion as they took the bulge class last year and we were advised this would not be repeated at the time. The additional traffic congestion through a major arterial road in a village is already very evident.

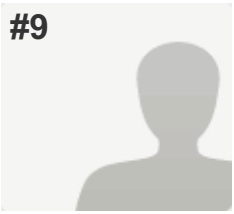
PAGE 4: COMMENTS

Q9: 5. Comments. If you have any comments relating to the above options, please give these below

Respondent skipped this question

More primary school places in the Ascot area

#9



COMPLETE



PAGE 3: NEW PRIMARY SCHOOL PLACES - YOUR VIEWS

Q8: Please rank the options in your order of preference from 1 (best) to 5 (worst).

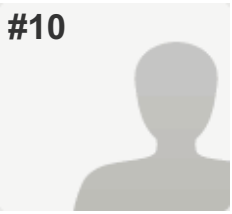
- | | |
|---|------------------------------|
| Option A - Expand Cheapside CE Primary School from 16 to 30 places per year group. | Best 1 |
| Option B - Expand South Ascot Village Primary School from 30 to 60 places per year group. | I do not support this option |
| Option C - Expand Holy Trinity CE Primary School from 30 to 60 places per year group. | I do not support this option |
| Option D - Build a new primary school in Ascot. | 2 |
| Option E - An alternative suggestion. | I do not support this option |

PAGE 4: COMMENTS

Q9: 5. Comments. If you have any comments relating to the above options, please give these below *Respondent skipped this question*

More primary school places in the Ascot area

#10



COMPLETE



PAGE 3: NEW PRIMARY SCHOOL PLACES - YOUR VIEWS

Q8: Please rank the options in your order of preference from 1 (best) to 5 (worst).

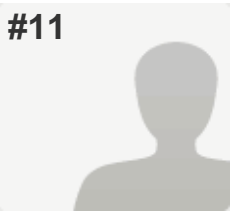
- | | |
|---|---------|
| Option A - Expand Cheapside CE Primary School from 16 to 30 places per year group. | Best 1 |
| Option B - Expand South Ascot Village Primary School from 30 to 60 places per year group. | 2 |
| Option C - Expand Holy Trinity CE Primary School from 30 to 60 places per year group. | 3 |
| Option D - Build a new primary school in Ascot. | 4 |
| Option E - An alternative suggestion. | Worst 5 |

PAGE 4: COMMENTS

Q9: 5. Comments. If you have any comments relating to the above options, please give these below

Respondent skipped this question

#11



COMPLETE



PAGE 3: NEW PRIMARY SCHOOL PLACES - YOUR VIEWS

Q8: Please rank the options in your order of preference from 1 (best) to 5 (worst).

- | | |
|---|---------|
| Option A - Expand Cheapside CE Primary School from 16 to 30 places per year group. | 2 |
| Option B - Expand South Ascot Village Primary School from 30 to 60 places per year group. | Best 1 |
| Option C - Expand Holy Trinity CE Primary School from 30 to 60 places per year group. | 3 |
| Option D - Build a new primary school in Ascot. | 4 |
| Option E - An alternative suggestion. | Worst 5 |

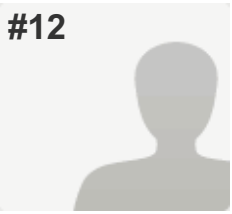
PAGE 4: COMMENTS

Q9: 5. Comments. If you have any comments relating to the above options, please give these below

Respondent skipped this question

More primary school places in the Ascot area

#12



COMPLETE



PAGE 3: NEW PRIMARY SCHOOL PLACES - YOUR VIEWS

Q8: Please rank the options in your order of preference from 1 (best) to 5 (worst).

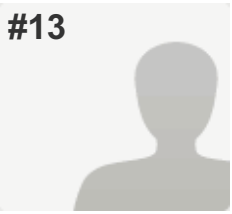
- | | |
|---|-------------------------------|
| Option A - Expand Cheapside CE Primary School from 16 to 30 places per year group. | 2 |
| Option B - Expand South Ascot Village Primary School from 30 to 60 places per year group. | Best 1 |
| Option C - Expand Holy Trinity CE Primary School from 30 to 60 places per year group. | 3 |
| Option D - Build a new primary school in Ascot. | I do not support this option |
| Option E - An alternative suggestion. | I have no view on this option |

PAGE 4: COMMENTS

Q9: 5. Comments. If you have any comments relating to the above options, please give these below

Land prices in the area will make the building of a new school too expensive. Use the land already owned.

#13



COMPLETE



PAGE 3: NEW PRIMARY SCHOOL PLACES - YOUR VIEWS

Q8: Please rank the options in your order of preference from 1 (best) to 5 (worst).

Option A - Expand Cheapside CE Primary School from 16 to 30 places per year group. 2

Option B - Expand South Ascot Village Primary School from 30 to 60 places per year group. 4

Option C - Expand Holy Trinity CE Primary School from 30 to 60 places per year group. Worst 5

Option D - Build a new primary school in Ascot. Best 1

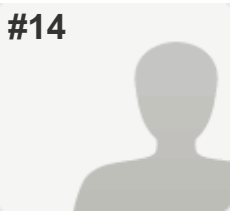
Option E - An alternative suggestion. 3

PAGE 4: COMMENTS

Q9: 5. Comments. If you have any comments relating to the above options, please give these below

Respondent skipped this question

#14



COMPLETE



PAGE 3: NEW PRIMARY SCHOOL PLACES - YOUR VIEWS

Q8: Please rank the options in your order of preference from 1 (best) to 5 (worst).

- | | |
|---|-------------------------------|
| Option A - Expand Cheapside CE Primary School from 16 to 30 places per year group. | 2 |
| Option B - Expand South Ascot Village Primary School from 30 to 60 places per year group. | I do not support this option |
| Option C - Expand Holy Trinity CE Primary School from 30 to 60 places per year group. | Best 1 |
| Option D - Build a new primary school in Ascot. | 3 |
| Option E - An alternative suggestion. | I have no view on this option |

PAGE 4: COMMENTS

Q9: 5. Comments. If you have any comments relating to the above options, please give these below

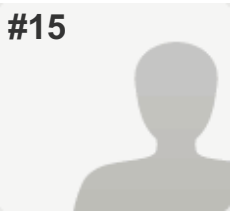
South Ascot Village School is not over subscribed as a first choice school and so expanding this school is unlikely to meet the objective that parents obtain their preference (or one of their preference) school.

Timing is key and we need to ensure one or more of the options can be ready for Sept 2017. I have selected Holy Trinity as my top option as this is closest to a number of the proposed areas of increased residential buildings.

Please also check your map as I think you have mislabeled St Francis and St Michaels.

More primary school places in the Ascot area

#15



COMPLETE



PAGE 3: NEW PRIMARY SCHOOL PLACES - YOUR VIEWS

Q8: Please rank the options in your order of preference from 1 (best) to 5 (worst).

- | | |
|---|------------------------------|
| Option A - Expand Cheapside CE Primary School from 16 to 30 places per year group. | I do not support this option |
| Option B - Expand South Ascot Village Primary School from 30 to 60 places per year group. | Best 1 |
| Option C - Expand Holy Trinity CE Primary School from 30 to 60 places per year group. | I do not support this option |
| Option D - Build a new primary school in Ascot. | I do not support this option |
| Option E - An alternative suggestion. | I do not support this option |

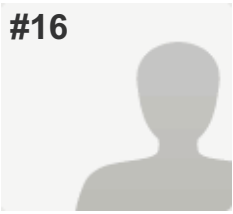
PAGE 4: COMMENTS

Q9: 5. Comments. If you have any comments relating to the above options, please give these below

Respondent skipped this question

More primary school places in the Ascot area

#16



COMPLETE



PAGE 3: NEW PRIMARY SCHOOL PLACES - YOUR VIEWS

Q8: Please rank the options in your order of preference from 1 (best) to 5 (worst).

- | | |
|---|-------------------------------|
| Option A - Expand Cheapside CE Primary School from 16 to 30 places per year group. | 2 |
| Option B - Expand South Ascot Village Primary School from 30 to 60 places per year group. | I do not support this option |
| Option C - Expand Holy Trinity CE Primary School from 30 to 60 places per year group. | I do not support this option |
| Option D - Build a new primary school in Ascot. | Best 1 |
| Option E - An alternative suggestion. | I have no view on this option |

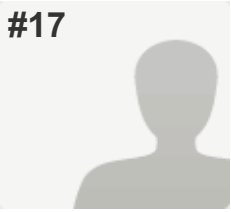
PAGE 4: COMMENTS

Q9: 5. Comments. If you have any comments relating to the above options, please give these below

Respondent skipped this question

More primary school places in the Ascot area

#17



COMPLETE



PAGE 3: NEW PRIMARY SCHOOL PLACES - YOUR VIEWS

Q8: Please rank the options in your order of preference from 1 (best) to 5 (worst).

- | | |
|---|-------------------------------|
| Option A - Expand Cheapside CE Primary School from 16 to 30 places per year group. | Best 1 |
| Option B - Expand South Ascot Village Primary School from 30 to 60 places per year group. | 4 |
| Option C - Expand Holy Trinity CE Primary School from 30 to 60 places per year group. | 2 |
| Option D - Build a new primary school in Ascot. | 3 |
| Option E - An alternative suggestion. | I have no view on this option |

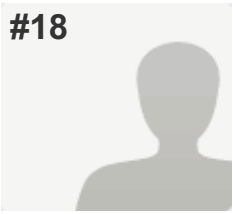
PAGE 4: COMMENTS

Q9: 5. Comments. If you have any comments relating to the above options, please give these below

It would be a bad idea to build on the swimming pool - this is a true asset to the school and is used everyday. Really is part of the village feel of the school

More primary school places in the Ascot area

#18



COMPLETE



PAGE 3: NEW PRIMARY SCHOOL PLACES - YOUR VIEWS

Q8: Please rank the options in your order of preference from 1 (best) to 5 (worst).

- | | |
|---|-------------------------------|
| Option A - Expand Cheapside CE Primary School from 16 to 30 places per year group. | I do not support this option |
| Option B - Expand South Ascot Village Primary School from 30 to 60 places per year group. | 3 |
| Option C - Expand Holy Trinity CE Primary School from 30 to 60 places per year group. | 3 |
| Option D - Build a new primary school in Ascot. | Best 1 |
| Option E - An alternative suggestion. | I have no view on this option |

PAGE 4: COMMENTS

More primary school places in the Ascot area

Q9: 5. Comments. If you have any comments relating to the above options, please give these below

I think Cheapside is the wrong location as all children would need to be driven and traffic is looking like a nightmare with the enlargement of Bracknell town centre and the associated commuters.

Having had children in a 30 intake school I now appreciate why parents want the choice between small and large schools. Sensitive and special needs children may have good reason to want a very small school. Personally I have found a single class moving through a whole school with little change in pupils creates friction. I would have liked the option to juggle children in to different classes after bullying and teasing has occurred to allow it to be forgotten and force the children to form new relationships.

I think having the option to select a school that is the right size for a child should be possible with greater capacity and making them all the same size limits choice. I would like to see one of the single form schools extended to a double.

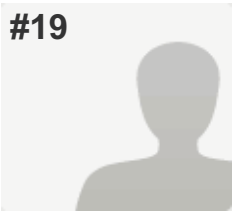
Parking is key to getting this right. Part of the traffic issue relates to getting children to multiple sites. Long term a pre school on the same site as older children (with outdoor space) may reduce traffic. Preschools in Sunninghill have no significant outside space which causes people to drive elsewhere.

I think South Ascot is a better location for the new school as it is near Heatherwood, and the station, however the pre school would need more before and after care rather than the very short day for commuters. Just an additional class is not enough.

I think there may be something that is being missed in terms of the cohort.

Cavendish meads used to be a family area. It has about 6 children in year 6 and a similar number in year 5. There is only one child in reception that I know of and only one applying this year. This is partly due to the number of houses that have been sold. Very few. A large number are occupied by the original inhabitants that are now well in to their 80 and even 90s. These will come up for sale or rent in the coming years and will put pressure on schools. How many other estates were built at a similar time and will be in a similar situation? I do not have the answer but suspect a large amount of North Ascot is similar. This could mean that there are far more families in the area in a decades time than we see from the birth rate.

#19



PAGE 3: NEW PRIMARY SCHOOL PLACES - YOUR VIEWS

Q8: Please rank the options in your order of preference from 1 (best) to 5 (worst).

Option A - Expand Cheapside CE Primary School from 16 to 30 places per year group. 2

Option B - Expand South Ascot Village Primary School from 30 to 60 places per year group. 2

Option C - Expand Holy Trinity CE Primary School from 30 to 60 places per year group. 2

Option D - Build a new primary school in Ascot. Best 1

Option E - An alternative suggestion. Best 1

Please give details of your suggested alternative(s) below.

DONT BUILD THE EXTRA HOUSES! WE NEED AN EXTRA PRIMARY SCHOOL AND/OR ASCOT HEATH NEEDS TO ACCEPT MORE PUPILS OR AT LEAST THE SAME FROM INFANT TO JUNIOR. PLEASE DONT BUILD ON MORE LAND AND RUIN WHAT WE HAVE.

PAGE 4: COMMENTS

Q9: 5. Comments. If you have any comments relating to the above options, please give these below

IF 1300 HOUSES ARE TO BE BUILT THEN ALL OF THE OPTIONS ARE STILL NOT ENOUGH. TEACHERS ARE LEAVING SCHOOLS LEFT, RIGHT AND CENTRE. CHARTERS WILL HAVE TO BE ENLARGED AGAIN. THE BIGGER PICTURE IS TO CREATE OUTSTANDING PRIMARY AND SECONDARY EDUCATION IN THE AREA, NOT JUST LOOK SHORT TERM AT PRIMARY - THATS AN INCREDIBLY NAIVE APPROACH TO THE SITUATION.

#20



PAGE 3: NEW PRIMARY SCHOOL PLACES - YOUR VIEWS

Q8: Please rank the options in your order of preference from 1 (best) to 5 (worst).

- | | |
|---|-------------------------------|
| Option A - Expand Cheapside CE Primary School from 16 to 30 places per year group. | Best 1 |
| Option B - Expand South Ascot Village Primary School from 30 to 60 places per year group. | I do not support this option |
| Option C - Expand Holy Trinity CE Primary School from 30 to 60 places per year group. | I do not support this option |
| Option D - Build a new primary school in Ascot. | I have no view on this option |
| Option E - An alternative suggestion. | I have no view on this option |

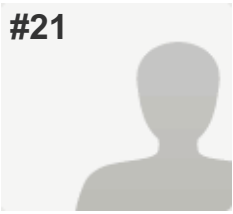
PAGE 4: COMMENTS

Q9: 5. Comments. If you have any comments relating to the above options, please give these below

The Cheapside school have capacity to deal with the increase and people outside Cheapside are willing to travel the distance for the school. It makes sense.

More primary school places in the Ascot area

#21



PAGE 3: NEW PRIMARY SCHOOL PLACES - YOUR VIEWS

Q8: Please rank the options in your order of preference from 1 (best) to 5 (worst).

- | | |
|---|-------------------------------|
| Option A - Expand Cheapside CE Primary School from 16 to 30 places per year group. | Best 1 |
| Option B - Expand South Ascot Village Primary School from 30 to 60 places per year group. | 4 |
| Option C - Expand Holy Trinity CE Primary School from 30 to 60 places per year group. | 4 |
| Option D - Build a new primary school in Ascot. | 2 |
| Option E - An alternative suggestion. | I have no view on this option |

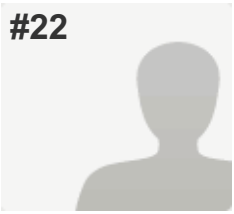
PAGE 4: COMMENTS

Q9: 5. Comments. If you have any comments relating to the above options, please give these below

Respondent skipped this question

More primary school places in the Ascot area

#22



PAGE 3: NEW PRIMARY SCHOOL PLACES - YOUR VIEWS

Q8: Please rank the options in your order of preference from 1 (best) to 5 (worst).

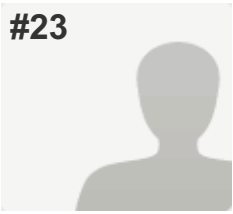
- | | |
|---|-------------------------------|
| Option A - Expand Cheapside CE Primary School from 16 to 30 places per year group. | Best 1 |
| Option B - Expand South Ascot Village Primary School from 30 to 60 places per year group. | Worst 5 |
| Option C - Expand Holy Trinity CE Primary School from 30 to 60 places per year group. | I do not support this option |
| Option D - Build a new primary school in Ascot. | 2 |
| Option E - An alternative suggestion. | I have no view on this option |

PAGE 4: COMMENTS

Q9: 5. Comments. If you have any comments relating to the above options, please give these below

Respondent skipped this question

#23



PAGE 3: NEW PRIMARY SCHOOL PLACES - YOUR VIEWS

Q8: Please rank the options in your order of preference from 1 (best) to 5 (worst).

- | | |
|---|-------------------------------|
| Option A - Expand Cheapside CE Primary School from 16 to 30 places per year group. | 3 |
| Option B - Expand South Ascot Village Primary School from 30 to 60 places per year group. | 2 |
| Option C - Expand Holy Trinity CE Primary School from 30 to 60 places per year group. | I do not support this option |
| Option D - Build a new primary school in Ascot. | Best 1 |
| Option E - An alternative suggestion. | I have no view on this option |

PAGE 4: COMMENTS

Q9: 5. Comments. If you have any comments relating to the above options, please give these below

I'm sure many parents would prefer another school rather than their child's was expanded, but I feel expanding Holy Trinity would lose the close-knit village atmosphere which makes it special. My daughter's friends live within walking distance and we try to use the car as little as possible, walking to school, clubs and play dates. In my opinion South Ascot is better placed to cope, and would be close to the larger housing developments in Ascot, Heatherwood etc. The roads around Holy Trinity are already congested and parking is difficult (more double yellow lines added recently to stop people parking close to junctions) so to provide school places to children who are not within walking distance would only make the area more dangerous for children walking to school. My daughter has already had the disruption of changing classrooms twice during her first year with the bulge intake and to have further disruption with building work for these children would be unfair, please consider the alternatives. Many thanks.

#24



PAGE 3: NEW PRIMARY SCHOOL PLACES - YOUR VIEWS

Q8: Please rank the options in your order of preference from 1 (best) to 5 (worst).

- | | |
|---|-------------------------------|
| Option A - Expand Cheapside CE Primary School from 16 to 30 places per year group. | Best 1 |
| Option B - Expand South Ascot Village Primary School from 30 to 60 places per year group. | 2 |
| Option C - Expand Holy Trinity CE Primary School from 30 to 60 places per year group. | 4 |
| Option D - Build a new primary school in Ascot. | 3 |
| Option E - An alternative suggestion. | I have no view on this option |

PAGE 4: COMMENTS

Q9: 5. Comments. If you have any comments relating to the above options, please give these below

I think Cheapside should be expanded first. 16 per year as an intake is very small and I am sure that the class sizes could accommodate a few more people.

My second choice was expanding South Ascot. They have a lot of (very wonderful) ground there which could be expanded onto.

Thirdly, I suggested a new school. Ultimately I expect that this will be the long-term option due to new housing being continually built in Ascot.

Fourthly, I suggested Holy Trinity - but this I think would cause major issues with traffic and there is less available land.

I do not have any other solutions I am afraid! I'd think expanding either Cheapside or South Ascot Village School would solve a short-medium term problem but building a new school would be the longer-term option.

More primary school places in the Ascot area

#25



PAGE 3: NEW PRIMARY SCHOOL PLACES - YOUR VIEWS

Q8: Please rank the options in your order of preference from 1 (best) to 5 (worst).

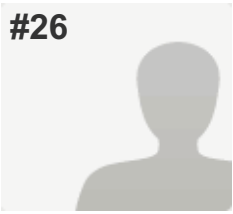
- | | |
|---|-------------------------------|
| Option A - Expand Cheapside CE Primary School from 16 to 30 places per year group. | Best 1 |
| Option B - Expand South Ascot Village Primary School from 30 to 60 places per year group. | 4 |
| Option C - Expand Holy Trinity CE Primary School from 30 to 60 places per year group. | 2 |
| Option D - Build a new primary school in Ascot. | 3 |
| Option E - An alternative suggestion. | I have no view on this option |

PAGE 4: COMMENTS

Q9: 5. Comments. If you have any comments relating to the above options, please give these below

Respondent skipped this question

#26



PAGE 3: NEW PRIMARY SCHOOL PLACES - YOUR VIEWS

Q8: Please rank the options in your order of preference from 1 (best) to 5 (worst).

- | | |
|---|-------------------------------|
| Option A - Expand Cheapside CE Primary School from 16 to 30 places per year group. | Best 1 |
| Option B - Expand South Ascot Village Primary School from 30 to 60 places per year group. | 2 |
| Option C - Expand Holy Trinity CE Primary School from 30 to 60 places per year group. | 3 |
| Option D - Build a new primary school in Ascot. | Worst 5 |
| Option E - An alternative suggestion. | I have no view on this option |

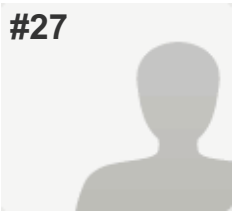
PAGE 4: COMMENTS

Q9: 5. Comments. If you have any comments relating to the above options, please give these below

Respondent skipped this question

More primary school places in the Ascot area

#27



PAGE 3: NEW PRIMARY SCHOOL PLACES - YOUR VIEWS

Q8: Please rank the options in your order of preference from 1 (best) to 5 (worst).

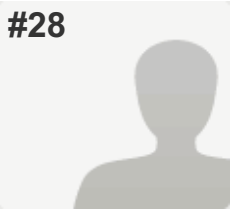
- | | |
|---|-------------------------------|
| Option A - Expand Cheapside CE Primary School from 16 to 30 places per year group. | Best 1 |
| Option B - Expand South Ascot Village Primary School from 30 to 60 places per year group. | 2 |
| Option C - Expand Holy Trinity CE Primary School from 30 to 60 places per year group. | 3 |
| Option D - Build a new primary school in Ascot. | 4 |
| Option E - An alternative suggestion. | I have no view on this option |

PAGE 4: COMMENTS

Q9: 5. Comments. If you have any comments relating to the above options, please give these below

Respondent skipped this question

#28



COMPLETE



PAGE 3: NEW PRIMARY SCHOOL PLACES - YOUR VIEWS

Q8: Please rank the options in your order of preference from 1 (best) to 5 (worst).

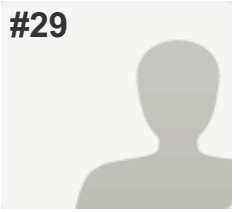
- | | |
|---|---------|
| Option A - Expand Cheapside CE Primary School from 16 to 30 places per year group. | Best 1 |
| Option B - Expand South Ascot Village Primary School from 30 to 60 places per year group. | 2 |
| Option C - Expand Holy Trinity CE Primary School from 30 to 60 places per year group. | Worst 5 |
| Option D - Build a new primary school in Ascot. | 4 |
| Option E - An alternative suggestion. | 3 |

PAGE 4: COMMENTS

Q9: 5. Comments. If you have any comments relating to the above options, please give these below

We should not expand church schools as education should be separate to religion.

#29



COMPLETE



PAGE 3: NEW PRIMARY SCHOOL PLACES - YOUR VIEWS

Q8: Please rank the options in your order of preference from 1 (best) to 5 (worst).

Option A - Expand Cheapside CE Primary School from 16 to 30 places per year group.	Best 1
Option B - Expand South Ascot Village Primary School from 30 to 60 places per year group.	4
Option C - Expand Holy Trinity CE Primary School from 30 to 60 places per year group.	3
Option D - Build a new primary school in Ascot.	2
Option E - An alternative suggestion.	Worst 5

Please give details of your suggested alternative(s) below.

St Michaels in Sunninghill was excluded from this consultation process. This should have been put forward as one of the options. It is granted that they have limited space for expansion, however there is scope for a second storey, and that school is surrounded by residents who use it, most of whom walk to school.

PAGE 4: COMMENTS

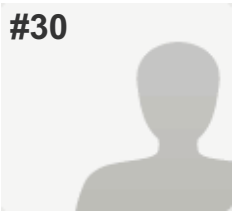
Q9: 5. Comments. If you have any comments relating to the above options, please give these below

Cheapside clearly has the most capacity to increase intake, and is already way below the intake the other schools in the area are offering. That should come up to join the others first.

Another option is that RBWM are now consulting with developers in Ascot High Street - and 200 homes are to be built. A proportion of these will have children of school age. It seems entirely sensible that a condition is put to developers for a new school to be part of that development. A school near to Ascot High Street would space out the school provision well - if you look at the schools plotted on the map.

More primary school places in the Ascot area

#30



COMPLETE



PAGE 3: NEW PRIMARY SCHOOL PLACES - YOUR VIEWS

Q8: Please rank the options in your order of preference from 1 (best) to 5 (worst).

Option A - Expand Cheapside CE Primary School from 16 to 30 places per year group.	2
Option B - Expand South Ascot Village Primary School from 30 to 60 places per year group.	I do not support this option
Option C - Expand Holy Trinity CE Primary School from 30 to 60 places per year group.	I do not support this option
Option D - Build a new primary school in Ascot.	Best 1
Option E - An alternative suggestion.	I have no view on this option

PAGE 4: COMMENTS

Q9: 5. Comments. If you have any comments relating to the above options, please give these below

There are proposals for more housing within Ascot and as such there should be a proposal for another primary school to be built to incorporate the increased numbers of families being encouraged into the area.

South Ascot has St Michaels, St Francis and SAVS all within close proximity.

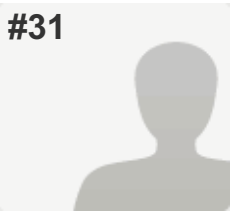
Cheapside is the obvious school which needs expansion as it is too small and the village has outgrown its capacity.

A new school is clearly required.

Which then puts pressure on secondary schools so this will also then be required.

More primary school places in the Ascot area

#31



COMPLETE



PAGE 3: NEW PRIMARY SCHOOL PLACES - YOUR VIEWS

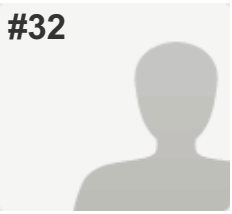
Q8: Please rank the options in your order of preference from 1 (best) to 5 (worst).

- | | |
|---|-------------------------------|
| Option A - Expand Cheapside CE Primary School from 16 to 30 places per year group. | I do not support this option |
| Option B - Expand South Ascot Village Primary School from 30 to 60 places per year group. | 3 |
| Option C - Expand Holy Trinity CE Primary School from 30 to 60 places per year group. | 2 |
| Option D - Build a new primary school in Ascot. | Best 1 |
| Option E - An alternative suggestion. | I have no view on this option |

PAGE 4: COMMENTS

Q9: 5. Comments. If you have any comments relating to the above options, please give these below *Respondent skipped this question*

#32



COMPLETE



PAGE 3: NEW PRIMARY SCHOOL PLACES - YOUR VIEWS

Q8: Please rank the options in your order of preference from 1 (best) to 5 (worst).

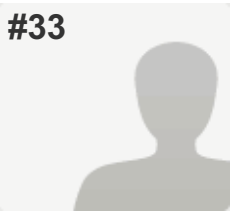
- | | |
|---|---------|
| Option A - Expand Cheapside CE Primary School from 16 to 30 places per year group. | Worst 5 |
| Option B - Expand South Ascot Village Primary School from 30 to 60 places per year group. | Best 1 |
| Option C - Expand Holy Trinity CE Primary School from 30 to 60 places per year group. | 3 |
| Option D - Build a new primary school in Ascot. | 2 |
| Option E - An alternative suggestion. | 4 |

PAGE 4: COMMENTS

Q9: 5. Comments. If you have any comments relating to the above options, please give these below

South Ascot probably is the school with the easiest ability to be extended out of the options suggested and is the only non religious school so would appeal to a wider group. Extending Cheapside is the worst option as it will only create 14 more places. Building a new school is the next best option but will take longer.

#33



COMPLETE



PAGE 3: NEW PRIMARY SCHOOL PLACES - YOUR VIEWS

Q8: Please rank the options in your order of preference from 1 (best) to 5 (worst).

- | | |
|---|-------------------------------|
| Option A - Expand Cheapside CE Primary School from 16 to 30 places per year group. | 3 |
| Option B - Expand South Ascot Village Primary School from 30 to 60 places per year group. | 4 |
| Option C - Expand Holy Trinity CE Primary School from 30 to 60 places per year group. | Worst 5 |
| Option D - Build a new primary school in Ascot. | Best 1 |
| Option E - An alternative suggestion. | I have no view on this option |

PAGE 4: COMMENTS

Q9: 5. Comments. If you have any comments relating to the above options, please give these below

Respondent skipped this question

More primary school places in the Ascot area

#34



PAGE 3: NEW PRIMARY SCHOOL PLACES - YOUR VIEWS

Q8: Please rank the options in your order of preference from 1 (best) to 5 (worst).

- | | |
|---|-------------------------------|
| Option A - Expand Cheapside CE Primary School from 16 to 30 places per year group. | 4 |
| Option B - Expand South Ascot Village Primary School from 30 to 60 places per year group. | I do not support this option |
| Option C - Expand Holy Trinity CE Primary School from 30 to 60 places per year group. | 3 |
| Option D - Build a new primary school in Ascot. | Best 1 |
| Option E - An alternative suggestion. | I have no view on this option |

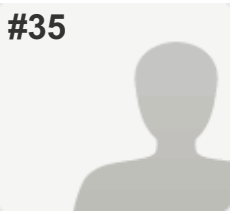
PAGE 4: COMMENTS

Q9: 5. Comments. If you have any comments relating to the above options, please give these below

Parking is tight already for the existing schools that are mentioned; expanding them would be disastrous for their local areas.

More primary school places in the Ascot area

#35



COMPLETE



PAGE 3: NEW PRIMARY SCHOOL PLACES - YOUR VIEWS

Q8: Please rank the options in your order of preference from 1 (best) to 5 (worst).

- | | |
|---|-------------------------------|
| Option A - Expand Cheapside CE Primary School from 16 to 30 places per year group. | 2 |
| Option B - Expand South Ascot Village Primary School from 30 to 60 places per year group. | 3 |
| Option C - Expand Holy Trinity CE Primary School from 30 to 60 places per year group. | 3 |
| Option D - Build a new primary school in Ascot. | Best 1 |
| Option E - An alternative suggestion. | I have no view on this option |

PAGE 4: COMMENTS

Q9: 5. Comments. If you have any comments relating to the above options, please give these below

The existing schools (which you intend to expand) were not built at a time when people drove their children to school. Therefore all the schools have horrendous traffic problems. I walk to school, and chose my school so that I could walk to school. But the vast majority do not walk to school and are encouraged to walk. The additional 200+ houses are bringing



[Redacted text]



[Redacted text]



[Redacted text]



[Redacted text]



[Redacted text]



[Redacted text]



[Redacted text]



[Redacted text]



[Redacted text]



[Redacted text]



[Redacted text]



[Redacted text]



[Redacted text]



[Redacted text]



[Redacted text]



[Redacted text]



[Redacted text]



[Redacted text]



[Redacted text]



[Redacted text]



[Redacted text]



[Redacted text]

More primary school places in the Ascot area



[Redacted text]



[Redacted text]



[Redacted text]



[Redacted text]



[Redacted text]



[Redacted text]

More primary school places in the Ascot area



[Redacted text]



[Redacted text]



[Redacted text]



[Redacted text]



[Redacted text]



[Redacted text]



[Redacted text]



[Redacted text]



[Redacted text]



[Redacted text]



[Redacted text]



[Redacted text]



[Redacted text]



[Redacted text]



[Redacted text]



[Redacted text]



[Redacted text]



[Redacted text]



[Redacted text]



[Redacted text]



[Redacted text]



[Redacted text]



[Redacted text]



[Redacted text]



[Redacted text]



[Redacted text]



[Redacted text]



[Redacted text]



[Redacted text]



[Redacted text]



[Redacted text]



[Redacted text]



[Redacted text]



[Redacted text]



[Redacted text]



[Redacted text]



[Redacted text]



[Redacted text]



[Redacted text]



[Redacted text]



[Redacted text]



[Redacted text]



[Redacted text]



[Redacted text]



[Redacted text]

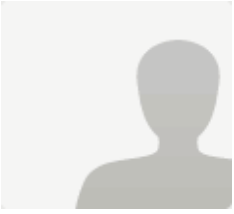
More primary school places in the Ascot area



[Redacted text]



[Redacted text]



[Redacted text]



[Redacted text]



[Redacted text]



[Redacted text]



[Redacted text]



[Redacted text]



[Redacted text]



[Redacted text]



[Redacted text]



[Redacted text]



[Redacted text]



[Redacted text]



[Redacted text]



[Redacted text]



[Redacted text]



[Redacted text]



[Redacted text]



[Redacted text]



[Redacted text]



[Redacted text]



[Redacted text]



[Redacted text]



[Redacted text]



[Redacted text]



[Redacted text]



[Redacted text]



[Redacted text]

More primary school places in the Ascot area



[Redacted text]



[Redacted text]



[Redacted text]



[Redacted text]



[Redacted text]



[Redacted text]



[Redacted text]



[Redacted text]



[Redacted text]



[Redacted text]



[Redacted text]



[Redacted text]



[Redacted text]



[Redacted text]



[Redacted text]



[Redacted text]



[Redacted text]



[Redacted text]



[Redacted text]



[Redacted text]



[Redacted text]



[Redacted text]



[Redacted text]



[Redacted text]



[Redacted text]



[Redacted text]



[Redacted text]



[Redacted text]

Q9: 5. Comments. If you have any comments relating to the above options, please give these below

Having attended the consultation evenings I believe that the short term solution for the LA is to expand the school at Cheapside to cater for the short term increase in demand, and, in order to provide for a long term solution, (i.e. a school that could be extended in the future and set up for a two class intake each year on opening) without any of the issues and disruption to our children's studies that extending the current schools will entail, the Council should look to develop a new school on a new site. By developing a new school the LA would be able to provide safe access to a large new campus, that would not put pupils safety on entry and exit from the school at risk (from transport overcrowding etc.), whilst also providing a long term solution to the area's primary schooling needs.

In terms of funding, with the development of multiple sites anticipated as part of the neighbourhood plan, Section 106 contributions from the developers of these sites would provide more than enough funding (and maybe even a site) for this need. In terms of local need, I would argue that Education is the most important need the area has at this time, and so should take precedent over any other need.

My family and I live opposite Holy Trinity School in Sunningdale. Having lived opposite the school for over 7 years we have found that the drop-off/pick-up provision for the school is wholly inadequate for the current size of the school, let alone any enlarged provision. There has been one incidence of a student being run-over in addition to many near misses that we have seen in this time.

At pick-up and drop-off times we often see:

- Parents parking on double yellow lines close to a T-junction of Station Road and Broomhall Lane, which is dangerous for cars turning off of Broomhall Lane;
- Cars trying to pass the parked cars on Station Road mounting the curb and driving along the pedestrian pathway, therefore endangering pedestrians. They even bib their horns at pedestrians to move when they are driving along the pathway!;
- Mass congestion in the local area, meaning that drivers are prepared to take extra risk to get past the row of cars in the road, such as accelerating very quickly, often above the speed limit of the road; and
- Using our culdersack, Charnwood, and others, as a car park, blocking our access to the drives of our houses.

All of the above creates a high risk environment for children arriving or leaving the school, which ultimately is a safeguarding risk that the school should be assessing and managing. Unfortunately letters to parents asking them to change their behaviour will not work, as most parents drive their children to school, irrespective of the distance that they are travelling.

Therefore, with twice the level of traffic caused by enlarging Holy Trinity, this would create an even more unacceptable level of risk caused by ineffective traffic management on an already busy road. Without creating a large on-site drop-off area, which would probably take up up to a third of the field of the school, I cannot see how this issue could be resolved.

In addition to the transport / site issues of the school, one of the reasons we decided to move to the village of Sunningdale and put our children in to a village school was because of Holy Trinity was a single class intake school. Sunningdale is a small village, where a good number of residents send their children to private schools. For those of us that do not, we value the nurturing nature of a small school environment for our children, where children are known and are not a number, and so where each child's individual needs are met. By the school being its current size it also acts as a community hub for local residents, which would be lost if it were to be enlarged and take in children from outside of the immediate community.

Therefore, because of the above, I do not feel that enlarging Holy Trinity School would be in the interests of the current and future children attending it or the community.



[Redacted text]



[Redacted text]

More primary school places in the Ascot area



[Redacted text]



[Redacted text]



[Redacted text]



[Redacted text]



[Redacted text]



[Redacted text]



[Redacted text]



[Redacted text]



[Redacted text]



[Redacted text]



[Redacted text]



[Redacted text]



[Redacted text]



[Redacted text]

More primary school places in the Ascot area

Q9: 5. Comments. If you have any comments relating to the above options, please give these below

At the Royal Borough's Cabinet meeting on 25th August 2016, I agree that they need to decide on the requirement for expansion for September 2017. As Cheapside has welcomed the option to expand and has the grounds to do so, this makes sense as it takes it up to full class sizes and brings it into balance with all the other schools in the cluster.

With regards the second point for the cabinet's consideration - to prioritise the second wave of development, as required, I strongly believe this decision should be postponed because:

1) School places should be provided in proximity to the development of estates of new affordable family homes i.e. that aren't likely to house private school educated children. Although certain sites are earmarked for possible development in the Ascot and the Sunnings Local Plan, it has not been decided which sites will be developed or, indeed, what types of developments each will focus on.

2) School places should be provided in proximity to the greatest need for places. That also has not been determined yet (see point 3). Primary state school children should be encouraged and able to walk to school, for health reasons, reducing carbon emissions, to settle their minds before they start classes, and to build and foster a sense of local community.

3) Provision of additional school places should move to the next stage of planning, only once the birth rate and other factors indicate that a permanent rise in school places will be required, beyond those being created at Cheapside. The current birth rate projections do not indicate that requirement exists.

4) School places should be planned for with macro environment factors in mind too - we need to see the impact of the decision to leave the EU on state school places, and any impact on the economy with regards children taking up private school places. There is no data or any available projections to support this forecasting at the moment.

For all these reasons, for the cabinet to prioritise the second wave options for further primary places at this stage is not only absurd, but irresponsible. I ask that the cabinet moves to postpone a decision on this point until more relevant and robust data, information and forecasting is readily available. Please do not make a decision now that could be very hard and costly to overturn or challenge at a later date, even though it might be evident in time, that a wrong decision was reached prematurely.

Thank you.



[Redacted text]



[Redacted text]



[Redacted text]



[Redacted text]



[Redacted text]



[Redacted text]



[Redacted text]



[Redacted text]



[Redacted text]



[Redacted text]



[Redacted text]



[Redacted text]



[Redacted text]



[Redacted text]



[Redacted text]



[Redacted text]



[Redacted text]



[Redacted text]



[Redacted text]



[Redacted text]



[Redacted text]



[Redacted text]



[Redacted text]



[Redacted text]



[Redacted text]



[Redacted text]



[Redacted text]



[Redacted text]



[Redacted text]



[Redacted text]



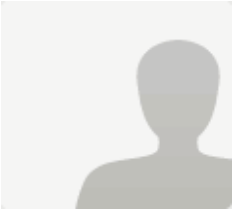
[Redacted text]



[Redacted text]



[Redacted text]



[Redacted text]



[Redacted text]



[Redacted text]



[Redacted text]



[Redacted text]



[Redacted text]



[Redacted text]



[Redacted text]

Q9: 5. Comments. If you have any comments relating to the above options, please give these below

Cheapside School, Green Lane, Cheapside (not Watersplash Lane).

(1) Cheapside School was last expanded in 2003 which meant we in Green Lane experienced heavy plant lorries and earth moving equipment for weeks as access was via the Green Lane allotments. The already eroded road was completely ruined but the builder agreed to rectify it and we thus have the best portion of road in Dorian Drive/Green Lane outside Nos. 1, 6 and 3 Green Lane. The school has advised us that on this occasion building work will take place via the school entrance.

(2) The major concern is one of safety - overflow of school staff vehicles means 6-10 cars parking in Dorian Drive and Green Lane from approx 8.45 am to 4.30 pm daily in term time. The ever increasing number of cars delivering/collecting children to/from the school sees both roads jammed with cars on pavements frequently making it impossible for a fire engine or ambulance to gain access. Indeed on Tuesday 28 June a large van wanting to deliver to a house in Dorian Drive at 11 am could not get through. After hooting his horn and knocking on several doors two residents assisted him by going to the school and a member of staff moved her vehicle to allow access - this took 35 mins. A house could have burnt down or a person's life been put in jeopardy in that time. Had the road still been blocked an additional 30 mins later the W&M recycling vehicle could not have got through to empty bins.

(3) Watersplash Lane is also heavily congested with parents delivering/collecting children making access to/from Dorian Drive/Green Lane difficult and dangerous with cars speeding down past the long lines of parked vehicles - no gaps are left for any car to access to allow oncoming vehicles to pass. With school events such as Sports Day and Christmas concerts the situation is further exacerbated.

Miraculously, since receiving information about the Cheapside School expansion and the consultation, we have hardly had any cars parked in Green Lane and most of Dorian Drive. There are several school staff cars parked still and some have now resorted to parking in Watersplash Lane. We cannot see that this situation will prevail for long and fully expect that staff and parents will resume parking in Dorian Drive and Green Lane, especially in inclement weather, once the consultation is over.

(4) We accept that more places are required in local schools. A great number of children attending Cheapside School come from outside and those who have moved into the village have to go elsewhere. With planned new housing there is a need for a new school to be built adjacent to such housing estates. Heatherwood, Sunningdale Park?? Is it the case the the Civil Service College, with its access/parking/buildings, of Larch Avenue will be vacated in 2017. Also places will be required in secondary schools which are already full to capacity. What is planned for additional places for them?

(5) Cheapside is a designated Green Belt area. In a further 10 years will it be the case that further expansion will be mooted?

(6) Incidentally, the road sweeper lorry has not been able to sweep Green Lane for months and we have resorted to sweeping it ourselves. Please can Green Lane (and Dorian Drive) be swept outside of school hours?



[Redacted text]



[Redacted text]



[Redacted text]



[Redacted text]

More primary school places in the Ascot area

Q9: 5. Comments. If you have any comments relating to the above options, please give these below

As you explained this evening there are pros and cons to each of the proposals to expand the number of school places in the Ascot area. I appreciate the effort you are making to seek the views of local residents.

I have no vested interest in any of the schools concerned, however I do live in the area. I believe good schools and the children who attend them are the life blood of any community.

I would like you to consider the following comments on the consultation:

The birth rate data indicates that there will be sufficient places with out any expansion. The proposed expansion of primary school places is based on the expectation of homes being built in the area. As you correctly explained much of the recent housing development has been flats, accommodation for 'senior citizens' and very expensive executive homes which are unlikely to generate a significant increase demand for state primary school places. It is therefore imperative that there is close liaison with the Planning Dept ahead of any approval of new developments.

There are a considerable number of 'private schools' in the Ascot area, does the RBWM have any data on the movement of children from state primaries to private primary schools? What evidence do you have that those children admitted to Reception Year complete their education in state schools in the Ascot area? What data is available in the borough on demographics of 'households' in the Ascot area to support the proposed need for more primary school places?

Not withstanding the concerns from local residents about parking around Cheapside School, an increase to a full form entry at this school seems the most sensible first phase to any primary school places expansion in Ascot for the reasons you have described.

I support the concerns about the lack of outside space available at St Micheal's. All primary aged children should have routine and easy access to a high quality outside learning environment therefore finding a suitable site to replace this village school with in walking distance of the village should be prioritised and included in the consultation. It has the potential to provide the opportunity to expand the school to 2 forms of entry whilst at the same time providing the school with proper facilities for outside learning. The Silwood Park site and the Gasholder site should be considered as new sites for St Micheal's rather than housing.

To what extent has consideration been given to 'pooling' of budgets across the council, for example education, primary health, children's services to provide a 'community hub' with integrated services and facilities for children, families and communities improving services and facilities at a time of spending constraints? This is particularly relevant to the re siting of St Micheal's School.



[Redacted text]

More primary school places in the Ascot area

been shown in previous years. In summary, we cannot see a strong case for a short term solution that Cheapside would potentially provide.

Cheapside is not the long term solution for many reasons:

a. Given its starting size and proposed extension, doubling the class sizes would only provide 15 new places per year, a total of 102 new places. This does not get near to the target of 300 to 650 new places required. Given that there is not an apparent short term issue then this is not a long term solution. Expansion at other schools, for example South Ascot Primary, would immediately offer more than double this number of places and provide a long term solution.

b. The Head Teacher at Cheapside has already recognised the issues with congestion and parents parking even with just 112 places and has had to instigate new measures for road and child safety, asking school parents to supervise the traffic at drop-off and pick-up. As residents, we often have problems turning in and out of Dorian drive at present, with a long extended line of cars up and down Watersplash lane and into Dorian drive. Moreover, there have been numerous instances of parents' cars blocking residents' driveways and turning in them when expressly asked not to. There is no way that the community can cope with double the number of cars. The idea that there can be staggered drop off and pick up times will not resolve the issue as many parents will have children in the upper and lower school and parents often stand and chat before and at the end of the school day, meaning that their cars are parked for quite some time. This can just about be tolerated at present, but the relationship between the school and its neighbours is likely to break down if the school doubles in size.

c. The location of the proposed new housing is all beyond walking distance from Cheapside, making the use of vehicles an inevitability. Cheapside was built as a village school with no real facilities for car drop offs, on the assumption that a significant proportion of the children walked to school. The size of the school is commensurate with the size of the local village community. Any long term solution should be considering a site nearer to the proposed new housing.

2. There are insufficient grounds for building on Green Belt

We are horrified to think that the Green Belt status can just be over-ridden for convenience. The whole purpose is to prevent the unnecessary expansion of housing and of other buildings. We purchased this property on the understanding that we had some guard against further building in the area. This is not something to be disregarded. Indeed, Cheapside School is not on a big enough site to allow it to increase in size; it would only be possible if the adjoining wooded area were leased out, which seems far from ideal and a last-resort option, not a first choice. The proposal to potentially dispense with the swimming pool and play field space in order to squeeze in further classrooms and parking space onto the small site would deprive the children of facilities damaging the school character.

3. The character and purpose of a village school

We believe that one of the reasons that Cheapside Primary has been ranked as Outstanding by Ofsted, is that it is small and has strong links with its community. One example of this is the way in which the school is so involved with the Royal Procession at Royal Ascot each year. Over the years, children who have struggled in larger primary schools have been transferred here, as it offers a different experience. This would be lost if it doubled in size and it would lose its sense of character and purpose, as well as risking animosity between the local residents in Dorian Drive and Watersplash Lane, and the school staff and parents. The result could be extremely damaging for all concerned.

Summary

We do understand that given the current council approach to funding, that Cheapside Primary School is under financial pressure. However, this is a financial issue to be resolved by the local authority. We do not support the expansion of the school and would seek to oppose any such move.

Kind regards



[Redacted text]



[Redacted text]

More primary school places in the Ascot area

Q9: 5. Comments. If you have any comments relating to the above options, please give these below

Thank you for the opportunity to respond to your consultation.

The area of interest to this consultation is adjacent to Bracknell Forest and has the possibility of affecting our provision of education in our North Ascot and Cranbourne schools. We are very concerned that the strategic impact on us has not been addressed either in the consultation materials or in separate discussions with this Council. In the spirit of working in partnership on issues of common interest we expected to have been involved at an early stage in this process.

We note that included in RBWM's draft local plan are two significant sites close to Bracknell Forest: 300 dwellings at Ascot High Street and 200 at Heatherwood. Other sites in the Ascot area take the total of dwellings that appear to be relevant to 800.

Based on the yield ratios that this Council uses, the dwellings in the High Street and Heatherwood developments would generate about 1 form of entry, about 30 places per year, on the basis that assumptions around dwelling type, size and tenure are similar. If all 800 dwellings are taken into account our estimate would be for 1.5 forms of entry.

We note that no developments are on land that is currently part of the designated areas for Bracknell Forest Council schools.

RBWM's options for providing new school places relate to either expansion of existing schools (options A-C) and/or a new school. It is noted that no detailed context is given to these options i.e. level of demand for school places that need to be provided for balanced against the number of additional places per option. However, it is clear that pursuing an option that does provide enough spaces to meet demand and/or in the absence of any option being pursued then it could result in additional pressure for places at BFC schools, in particular our Ascot Heath Infant and Junior, Cranbourne Primary and Winkfield St Mary's Primary schools. We want to stress that our Council forecasts indicate that these schools are likely to be full (based on their current number of places) for the foreseeable future from children living within the designated areas of the schools in North Bracknell.



[Redacted text]



[Redacted text]



[Redacted text]



[Redacted text]

More primary school places in the Ascot area

Q9: 5. Comments. If you have any comments relating to the above options, please give these below

The borough's consultation document presented at the Cordes Hall, Sunninghill sets out 4 options for delivering additional primary school places. Three of the options are for expanding one of our areas existing primary schools, and one option is for the construction of a new primary school.

The document rightly recognizes that St. Michael's C of E Primary School does not have the space to expand its primary provision, but viable options have been developed for Cheapside, South Ascot, and Holy Trinity. These options all have the advantage of being deliverable in time for the September 2017 intake, and at a much lower cost than a new school (£1.5m vs £6.5m).

If the consultation comes out in favour of a new school (Option D) then a site must be found for it. One suggestion at the meeting in the Cordes Hall was to relocate St. Michael's to the old gasholder site on the south side of the village. This was also one of several options identified in paragraph 9.6 of the Ascot, Sunninghill and Sunningdale Neighbourhood Plan, now adopted.

Our school and its governors do not support this option, for the following reasons:

a. The School is at the center of the village and is very much at the heart of the community it serves. The school is listed in the Neighbourhood Plan as a landmark building and the views of the school are landmark views.

Relocation of the school would be a real loss to the village.

b. At present the school lies near the center of its catchment and many of the pupils are within safe walking distance. The relocation would result in many more children having to be driven to school.

c. The relocation of St. Michael's is not cost effective, as the cost would include both the new places required, and replacement of the existing places.

d. There are access issues to the gasholder site, which is down a private road with on-street parking, making it effectively one way. The volume of traffic from and onto the High Street at periods of peak traffic is also a concern.

e. Any new school should be located within its catchment, be within easy walking / cycling distance of the new development it serves and have good access and adequate parking.

The draft local plan identifies two development sites in the Ascot area, Ascot Centre (300 homes) and Heatherwood (200 homes) In addition to housing the Ascot Centre site includes a new primary school as well as a strategic open space, a community hub and a good network of pedestrian and cycle routes linking the site, to the High Street, station and Heatherwood.

We consider the Ascot Centre site to be the right location for a new primary school, and one we could support as it delivers a school within the catchment it serves and easy and safe pedestrian and cycle access.

If the decision is to expand one of the sites identified in options A to C, then we see Option A (Cheapside Expansion) as a sound option. The school is graded outstanding and the expansion will enhance the long term viability of the school.

This page is intentionally left blank